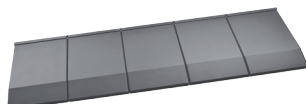


# Quadro by Icopal Acoustic S

## Technical Product Data



### Pitch

Minimal pitch	15°
Maximal pitch	90°

### Dimensions

Size of tile - overall (w x h)	1293mm x 419mm
Size of tile - cover (w x h)	1250mm x 399mm
Coverage	0,5 m <sup>2</sup> per element (2 elements per m <sup>2</sup> )
Thickness steel	0,75mm
Type of steel + composition	ZM250 g/m <sup>2</sup>

### Weight

Weight per element	4,0 kg
Weight per m <sup>2</sup>	8,0 kg

### Fixings (Icopal fixing recommended)

Fixings per element	3 pieces (6 per m <sup>2</sup> )
---------------------	----------------------------------

### Battens

Batten distance	399mm (double battening: 174 & 225mm)
Center distance battens (max.)	Minimal batten thickness (recommended)
600mm	38mm x 30mm (h x w)
900mm	50mm x 30mm (h x w)
1200mm	50mm x 50mm (h x w)

### Usage

See installation guide	
------------------------	--

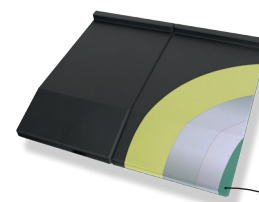
### Weather resistance

UV-resistant	Colourfast by Qualicoat Class 2
Noise (directly under the roof during heavy rain)	Li = 65 dB

### Package

	<b>0,75mm steel</b>
Elements per pallet	160 elements

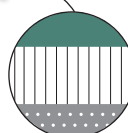
## Composition Quadro by Icopal Acoustic S roof tile



Antiblocking surface finish

Bitumen-magnetic foil

Hotmelt



Extra durable Qualicoat Class 2 coating toplayer

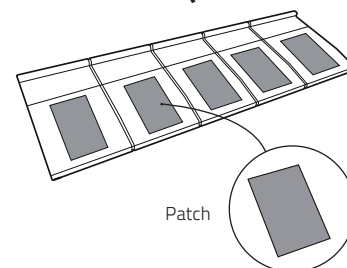
Polyurethane primer

ZM250 g/m<sup>2</sup> steel

Polyurethane primer

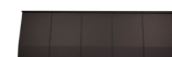
SONIT® BMH 40 Acoustic S patch

## Acoustic patch placed at the back side of the Quadro tile



Patch

## Colours



Graphite (31)



Mole Grey (41)



Brick (35)



Black (71)